

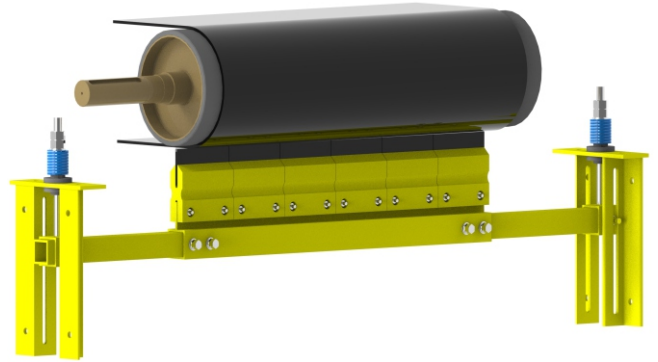
## BHARAT SECONDARY BELT SCRAPER SHD

### BMD BHARAT SECONDARY BELT SCRAPER SHD

incorporates individually PU cushioned tungsten carbide blades with mild steel backing plate for effective cleaning without risk to belt, splice or blade.

Installed in the secondary cleaner position, the secondary PU blade buffers cushion impact and maintain effective cleaning pressure.

**BMD ENGINEERING SOLUTIONS** newly enhanced Premium Secondary belt scraper, which is having segmented PU buffer with tungsten carbide blades and telescopic mainframe made up of structural steel.



### BENEFITS

#### Telescopic Mainframe

Its allows easy maintenance and easy installation.

#### Built For Tough Conditions

Rugged construction withstands punishing applications, like high-speed belts and high-tonnage loads.

#### Easy Adjustment Of Cleaning Pressure

BMD Secondary Belt Scraper mounting arrangement allows simple alteration of blade-to-belt pressure to maintain cleaning efficiency regardless of blade

#### Fits in Tight Spaces

Compact design allows installation in close quarters narrow profiles resists material buildup.

#### Application Blades to Match

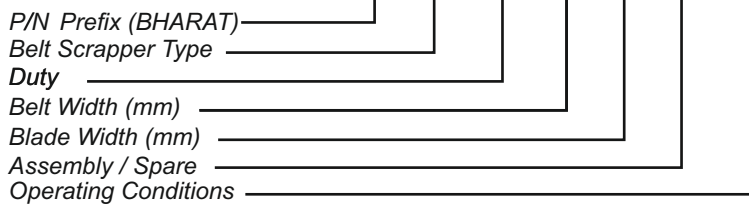
Specify tungsten carbide tips for normal, acidic, or high-impact conditions. Blades conform to belt profile by adjusting individually to provide continuous contact across the belt.

#### Handles Reversing Belts and Belt Rollback

PU buffers allow for reversal of belt direction without damage to belt.

### NOMENCLATURE

**BH-XXX-XXX-BW-BC-XXX-XXX**



### BELT SCRAPER TYPE

**SBS:** SECONDARY BELT SCRAPER

### DUTY

**SHD:** SUPER HEAVY DUTY

### MAINFRAME & BLADE

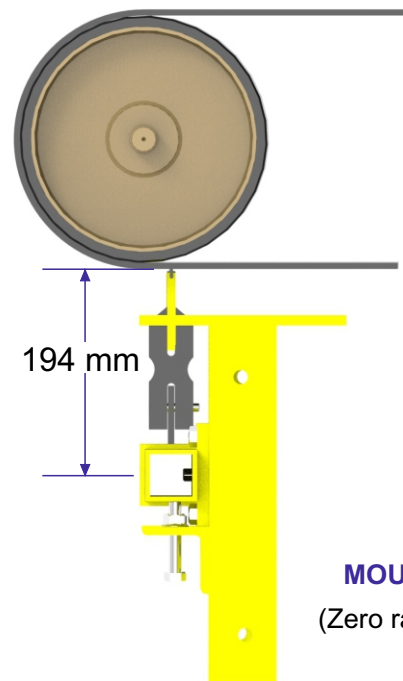
**ASM:** ASSEMBLY

**SPR:** BLADE & LOCK PINS

### OPERATING CONDITION

**AMB:** AMBIENT

**HRT:** HEAT RESISTANT



**MOUNTING POSITION**  
(Zero rake angle to the belt)

## BMD ENGINEERING SOLUTIONS

Works At:- Plot No. C 39/2, Mhalunge, Chakan MIDC, Phase-1, Pune (MH) - 410501, Mob.- 77353 89730 / 83800 90023.

E-mail:- sales@bmdindia.com , bmdengineersales@gmail.com , Web: www.bmdindia.com

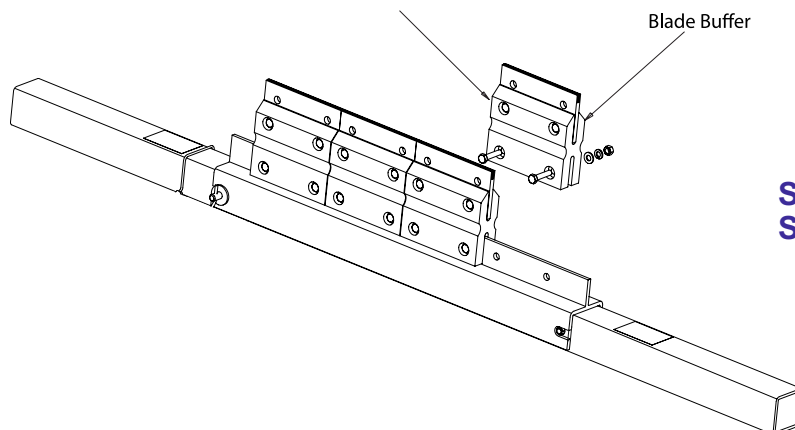
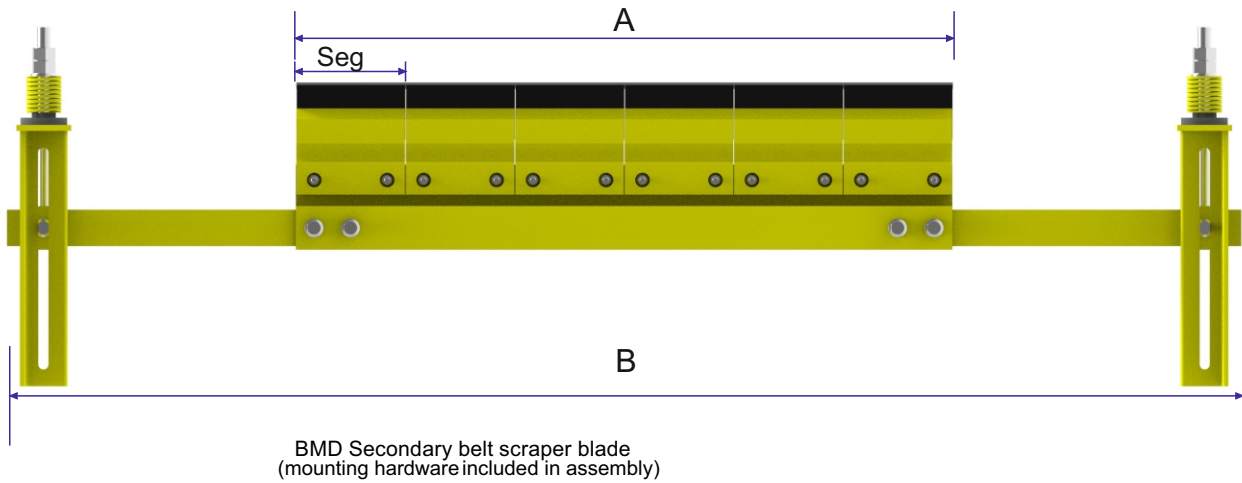
**DIMENSIONS --(mm)**

Belt Width mm	Mainframe Length (B) mm	Blade Coverage (A) (mm)	Blade segment* (No.)	Rubber Material	
				For Ambient Temp.	For 80-150°C.
600	1400	450	3	Polyurethane	Polyurethane
750	1550	600	4	Polyurethane	Polyurethane
900	1700	750	5	Polyurethane	Polyurethane
1050	1850	900	6	Polyurethane	Polyurethane
1200	2000	1050	7	Polyurethane	Polyurethane
1350	2150	1250	8	Polyurethane	Polyurethane
1500	2300	1350	9	Polyurethane	Polyurethane
1650	2450	1500	10	Polyurethane	Polyurethane
1800	2600	1650	11	Polyurethane	Polyurethane
1950	2750	1800	12	Polyurethane	Polyurethane
2100	2900	1950	13	Polyurethane	Polyurethane
2250	3050	2100	14	Polyurethane	Polyurethane
2400	3200	2250	15	Polyurethane	Polyurethane

Note: Dual side tensioner's are required for all belt widths.

Mainframes are all telescopic type for easy Installation

### Secondary belt scraper SHD



**Sketch for Secondary belt scraper**